



TOPLAND ENGINES PVT. LTD.

" STRENGTH IN EVERY PIECE "

BOARD MEMBERS

Meet Bhanderi, Age: 25 Years

CIO and CFO

High School:

Chinmaya International Residential School (**Coimbatore, Tamil Nadu, India**)

International Baccalaureate Diploma (**EF, New York, USA**)

College:

Bachelors of Sciences in Computer Science (**Pennsylvania State University, State College, Pennsylvania, USA**)

Masters of Sciences in Computer Science (**Florida Atlantic University, Boca Raton, Florida, USA**)



Shyam Bhanderi, Age: 29 years

CEO and GM - Operations

High School:

Chinmaya International Residential School (**Coimbatore, Tamil Nadu, India**)

International Baccalaureate Diploma (**Mercedes-Benz International School, Pune, Maharashtra, India**)

College:

Bachelors of Sciences in Electro-Mechanical Engineering Technology (**Pennsylvania State University-Berks, Reading, Pennsylvania, USA**)

Masters in Electrical Engineering (**Florida Atlantic University, Boca Raton, Florida, USA**)



ABOUT US

- Topland Group of Companies - Founded in 1981
- Based in Rajkot, Gujarat, India - 360004
- Manpower - 800+ Employees
- Diverse product portfolio of over 35 products catering 6 various industrial sectors
- 14 manufacturing, assembly, and quality control units
- Spread over 50 acres across the city of Rajkot, Gujarat, India
- 250+ dealers and distributors across India
- Exporting to 35 countries across Africa, Europe, Middle East, and Central America



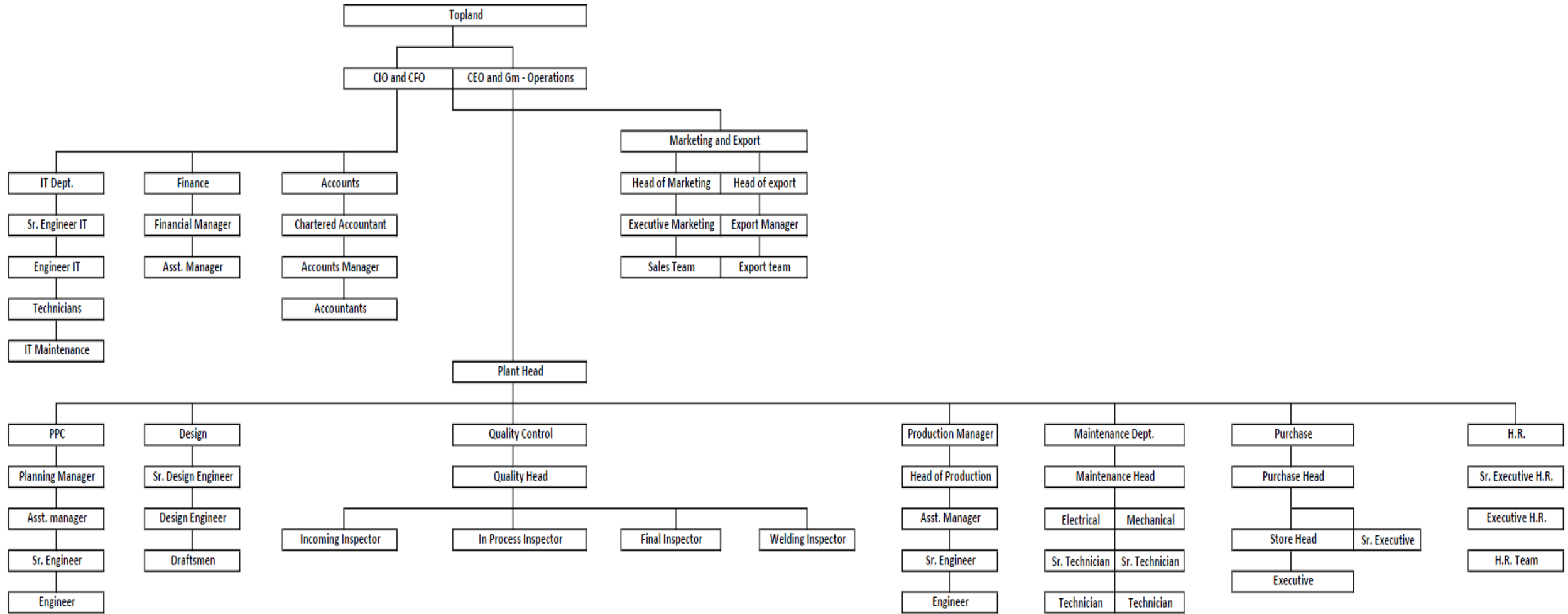
MILESTONES
ACHIEVED

MILESTONES ACHIEVED

- ISO 9001:2015 TUV SUD (Reg. No. 99 100 23743)
- RDSO approved (Vendor Directory ID: 66252)



ORGANOGRAM



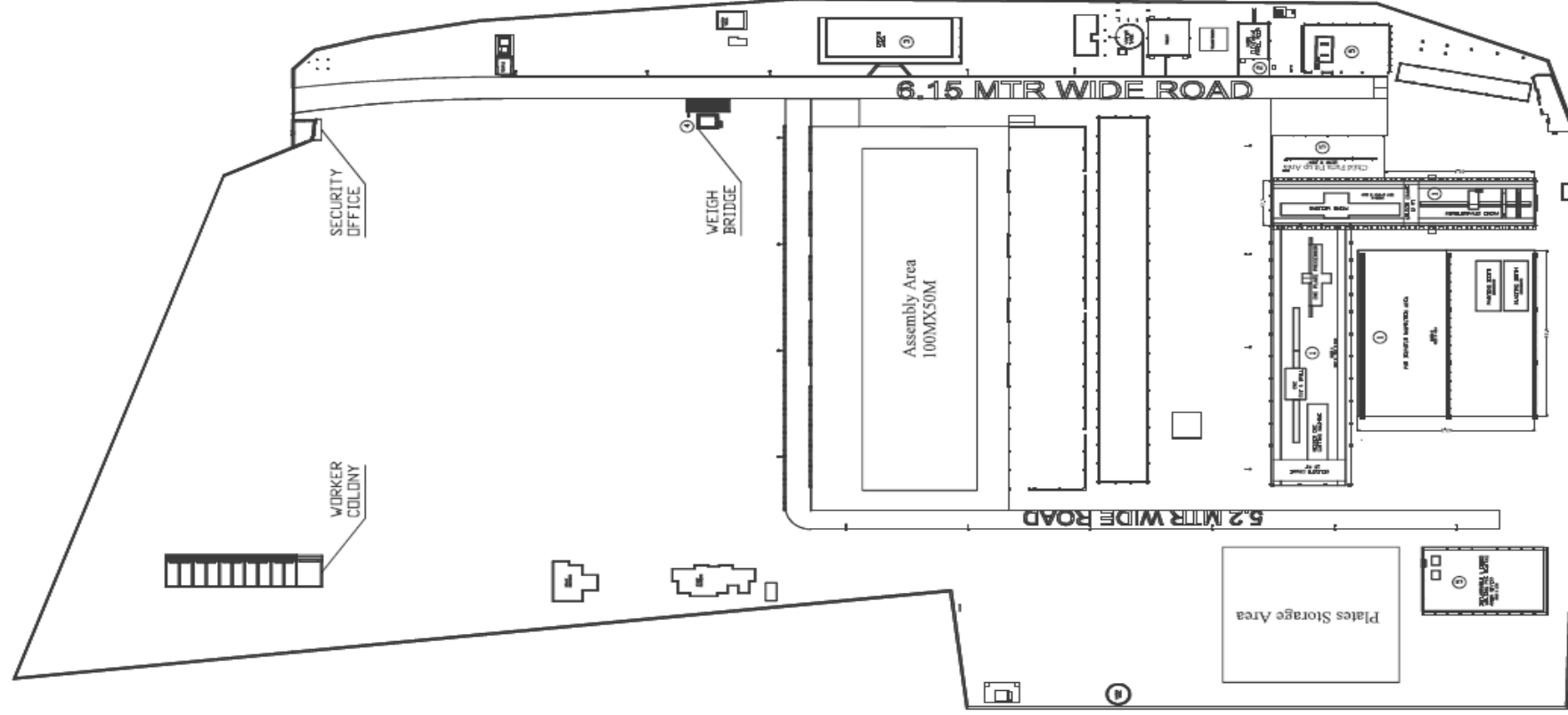
PLANT TOUR



PLANT LAYOUT

TABLE 01	
SR. NO.	NAME OF STRUCTURE
1	FACTORY SHED
2	ELECTRICAL PANEL ROOM
3	OFFICE BUILDING
4	WEIGH BRIDGE
5	STORE

Total Area = 6,53,400 sq. ft.
 Covered Area = 90,902 sq. ft.



SHED 1 CUTTING / DRILLING (BAY 1-72.7 X 17.8)
 SHED-2 FABRICATED BLACK MATERIAL OUT (BAY 2-64.4 X 12.3)
 SHED-3 BLASTING & PAINTING BOOTH (BAY-3-43.3 X 46.4)

NOTE: ALL DIMENSIONS ARE IN METERS UNLESS OTHERWISE SPECIFIED.

REVISION TABLE		NO.	DATE	DN NO.	TITLE:	DRG. NO.	NAME	DATE
~	>50		12.5-25		TEPLFACTORY LAYOUT	TEPL/PL/01	S.B	24/10/2023
▽	1.6-6.3		0.2-0.8		N.T.S.		A.K	23/10/2023
▽▽	0.1-0.025		0.1-0.025				G.P	23/10/2023

TOPLAND ENGINES PRIVATE LIMITED

MAIN ASSY: - SUB ASSY: -

MATERIAL: - SCALE: -

WEIGHT: - N.T.S.

DESIGN BY: G.P

CHD. BY: A.K

APPD. BY: S.B

DRG. NO. TEPL/PL/01



PLANT TOUR



PLANT TOUR



PLANT TOUR



PLANT TOUR



PLANT TOUR



PLANT TOUR

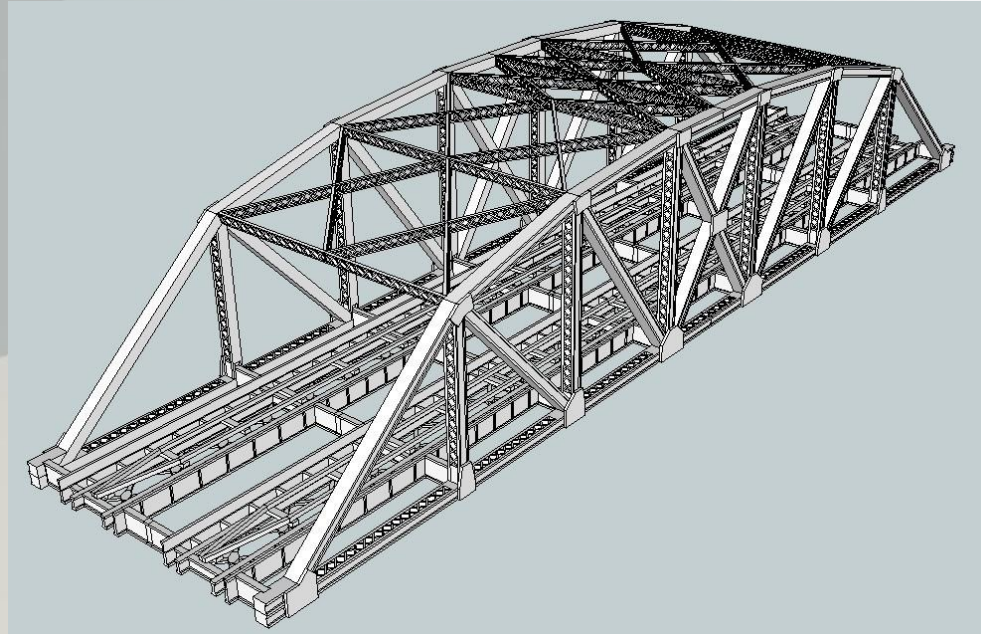
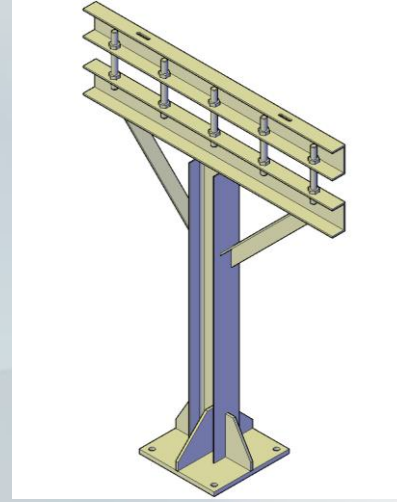
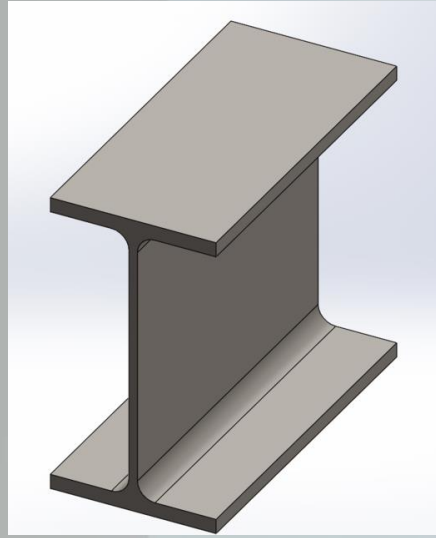
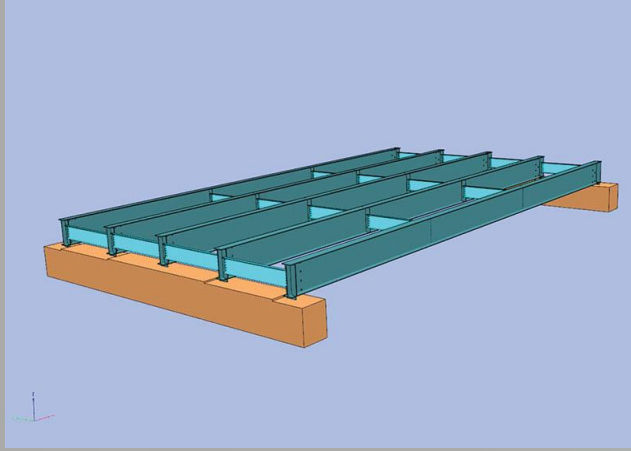


PRODUCT PORTFOLIO

STEEL BRIDGE COMPONENTS (FOB, ROB, OPEN WEB, COMPOSITE AND GIRDERS THAT ARE FABRICATED FOR INDIAN DESIGNS)

- I & H-BEAMS
- HEAVY COLUMNS
- HEAVY GIRDERS
- BOX COLUMNS
- BOX GIRDERS
- PEB/PFB STRUCTURES
- STIFFNERS
- RAFTERS
- SPLICES
- TRUSS FRAMES
- GUSSET PLATES
- BRACINGS
- BOW-STRING GIRDERS

PRODUCT PORTFOLIO





MISSION

Provide stellar quality fabricated products for manufacturing structural steel parts and items, through unparalleled craftsmanship and unrivaled after-sales service.



VISION

Become the biggest supplier of fabricated steel products in India by 2030.

CORE VALUES



A photograph of the Golden Gate Bridge in San Francisco, California, taken during sunset or sunrise. The bridge's iconic orange-red towers and suspension cables are silhouetted against a soft, hazy sky with warm, golden light. The water of the bay is visible in the foreground, and the bridge's intricate steel truss structure is prominent on the left side.

*BEST QUALITY AT
AFFORDABLE PRICES*

TEPL CAPABILITIES OVERVIEW



Ability to process 10,000 MT per annum

Fastest processing time in India

State-of-the-Art Manufacturing, Processing and Testing Machineries

Tested using world class equipment to NIL any error discrepancies



STATE-OF-THE-ART FACILITY

- Cut & Drill

Standard beam, angle and channel processing line, drilling, milling, punching and bandsaw cutting for pieces upto 12m(l) x upto 1.3m(w)



- Plate Processor

Standard plate processor upto 6m(l) x 3m(w) with punching, drilling, marking and hypertherm plasma cutting



STATE-OF-THE-ART FACILITY

- Oxy Fuel and Plasma Cutting

Plate cutting up to 80mm thickness including bevel options



- Automation Systems

Vertical beam welding machine for beam welding upto 12m(l) x 3m(w) x 50mm(thickness) with 90 deg tilter

Beam straightening machine also installed to compliment the welding line with 180 deg flipper.



STATE-OF-THE-ART FACILITY

- Shot blasting and Painting booths

Equipped with automated dust collector and grit collection system

- End Milling Machine

Capacity - 1200mm x 2500mm up to 14 meters



HANDLING CAPACITY

- 20 MT Crane
- Hydro Crane and Farana also available as per project requirement

- 10 MT Crane
- Hydro Crane and Farana also available as per project requirement



HANDLING CAPACITY

- Hydro Crane and Farana available as per project requirement (make: ACE)
- Forklift owned by TOPLAND (make: GODREJ)



LIST OF QC AND MEASURING EQUIPMENT

TOPLAND ENGINES PVT. LTD.						
LIST OF MEASURING EQUIPMENTS						
Sr. No.	Name	Code No.	Make	Serial No.	Range	Remarks
1	Digital Vernier Caliper	TEPL/DVC/01	Mitutoyo	0067961	0-300mm	
2	Digital Vernier Caliper	TEPL/DVC/02	Mitutoyo	0070960	0-300mm	
3	Bevel Protector	TEPL/BP/01	Mitutoyo	004409	0-360°	
4	Infrared Thermometer	TEPL/IT/01	Professional Instruments	2603745	-30 to 1150°C	
5	Welding Gauge	TEPL/WG/01	Kristeel	-	0-25mm	
6	Measuring Tape-5M	TEPL/MT/5M/01	Freemans	-	1-5000mm	
7	Measuring Tape-5M	TEPL/MT/5M/02	Freemans	-	1-5000mm	
8	Measuring Tape-15M	TEPL/MT/15M/01	Freemans	-	1-15000mm	
9	Measuring Tape-15M	TEPL/MT/15M/02	Freemans	-	1-15000mm	
10	Measuring Tape-100M	TEPL/MT/100M/01	Freemans	-	1-100000mm	
11	Measuring Tape-30M	TEPL/MT/30M/01	Freemans	-	1-30000mm	
12	LASER DISTANCE METER	TEPL/LDM/01	BOSCH	227298833	1-150000mm	
13	CROSSLINE LASER LEVEL	TEPL/CLL/01	BOSCH	225001667	1-50000mm	
14	Auto Level(dumpy level)	TEPL/AL/01	Sokkia	-	0-40000mm	
15	Cross Cut Test Kit	TEPL/CT/01	Accuplus	-	1 to 2mm	
16	Blasting Profile Comparator	TEPL/RC/01	Rubert	36090	-	
17	Wet Film Thickness Gauge	TEPL/WFT/01	Accuplus	A2729	25-3000μ	
18	Dry Film Thickness Gauge	TEPL/DFT/01	Accuplus	1256098	0-1500μ	
19	Profile Gauge	TEP/PG/01	Accuplus	A68103	0-12.7mm	
20	Micrometer	TEPL/MM/01	Micrometer	W774	0-25	
21	MPI Yoke	TEPL/MPI/01	Magnaflux	2024055452	21Kg & 5Kg	
22	Flux Drying Oven	TEPL/FO/01	Haridas	23092326	500Kg	
23	Electrode Drying Oven	TEPL/EDO/01	Haridas	23092332	400Kg	
24	Tong Tester	TEPL/TT/01	Fluke	64430545WS	1000A	
25	RT Film Viewer	TEPL/RTFV/01	Magnafield	2351	4"X12"	

CONTACT US

HEAD OFFICES

2, Umakant Pandit Udyognagar, Mavdi Plot, Rajkot, Gujarat, India - 360004
Phone: +91 281 2360222-3-4, +91 9099777879

MANUFACTURING UNIT

1 and 2, TOPLAND, RAJKOT-JAMANAGAR HIGHWAY, KHANDERI
STADIUM, Targhadi, Rajkot, Gujarat, India - 360110
Phone: +91 9099777879, +91 9558631308

SPB@TOPLAND-INDIA.COM

EXPORT@TOPLAND-INDIA.COM

SALES@TOPLAND-INDIA.COM

INQUIRES@TOPLAND-INDIA.COM



टोपलैंड

Topland

توب لاند

topland-india.com

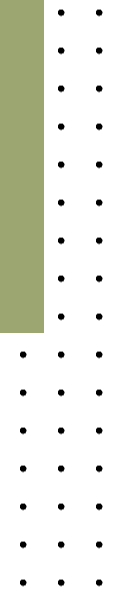
Shyam Pankajbhai Bhanderi
CEO

Mobile : +91 90997 77879
E-mail : spb@topland-india.com

Topland

2, Umakant Pandit Udyognagar,
Mavdi Plot, RAJKOT-360004.
(Guj.) INDIA

Phone : +91 281 2360222-3-4
Fax : +91 281 2364499
E-mail : export@topland-india.com



THANK YOU